

SAVOYARDS

MUSICAL
COMEDY
SOCIETY

PRESENTS

by Courtesy
of
BOOSEY
and
HAWKES

LEO
FALL'S



THE DOLLAR PRINCESS

Music Adapted and Arranged
by
Ron Harmer

New Book and Lyrics
by
Phil Park

MAY-JUNE 1981

The Fairytale Castle of Australia



**See knights in armour and a great display
of mediaeval weaponry**

PLUS 7 fairystories in elaborate dioramas

Climb the towers and battlements

**NOW OPEN IN THE NEW TOWER BUILDING
A FANTASTIC DISPLAY**

FEATURING

50 COUNTRIES AROUND THE WORLD

**With fabulous costuming and animation.
five minutes drive north of Maroochydore
on the coastal highway.**

SAVOYARDS MUSICAL COMEDY SOCIETY

Patrons	LADY COOPER Mr. D. JULL, M.H.R. Mr. W. LAMOND Ald. D. RANDALL Mrs. V. E. LEWIS, O.B.E. Mr. IAN McADAM
Director	ISOBELLE TOMKINS
President	MARGARET SCOTT
Vice-President	MARIE WALSH
Secretary	SUSETTE EREAUT
Treasurer	PHYLL GRIFFIN
Subscriber Secretary/Public Relations	BETTY HILL
Committee:	
Stage Management: JIM TOMKINS, RON JAMES. Wardrobe: CORAL READSHAW. Musical Director's Representative: VAL JONES. Selection Committee Representative: ADA GROENHART. Lighting: ALAN NUTLEY. Publicity: ISOBELLE TOMKINS (pro. tem.). Box Office: BERYL HORTON, DORIS NUTLEY.	
Life Members:	
Mr. A. G. NUTALL, Mr. and Mrs. J. B. FOLEY, Mrs. M. WALSH, Mrs. T. GRAY, Mr. A. JEFFRIES, Mr. G. ARNELL (dec.).	

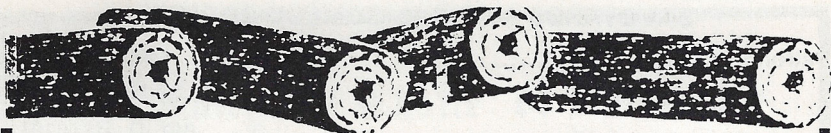
CREDITS

Producer	MARGART GIBBS
Musical Director	GEORGE DANIELS
Choreographer	SHIRLEY JOHNSON
Chorus Choreography	MARGARET GIBBS
Pianists	ESME GRAY, THEA GRAY
Set Design	KEITH SMITH
Set Painting	MELISSA TRUEMAN, TERRY QUINN
Set Construction	KEITH SMITH
Stage Manager	KEITH SMITH
Assistant to Stage Manager	WAYNE WEBBLEY
Lighting	ALAN NUTLEY, KEITH KELLEY, PETER RABE KEITH WADSWORTH
Wardrobe Mistress and Costume Design	CORAL READSHAW
Wardrobe Assistants	DERRYL SWITZER, KAYE NUTLEY
Hair and Make-up	KAYE NUTLEY
Official Photographer	REG NUTLEY
Programme	ISOBELLE TOMKINS
Programme Cover and Posters	MELISSA TRUEMAN
Advertising	MARIE WALSH
House Management	DORIS NUTLEY
Props	SUSETTE EREAUT, BETTY ASHER
Prompt	BETTY HILL
Continuity	CAROLE MCKINNEY
Foyer Board	LLOYD KELK
Advertising (Murwillumbah)	DENNIS HALWORTH
(Nambour)	FRANK DAVIES, JEAN and LES BROWNING

ACKNOWLEDGEMENTS

SAVOYARDS would like to thank CHRIS TURNER & SCOTT, BETTY HILL and ADA GROENHART for valued assistance. BRYAN AULD for Box Plans. BISHOP'S PHARMACY for Bookings, DORIS NUTLEY and ALL FRONT of HOUSE STAFF, SUBSCRIBERS, PATRONS and ADVERTISERS for their support.

NOTE: Any visible microphones are for taping purposes only. Not amplification.



**BUILD AUSTRALIA BETTER with
TIMBER and HARDWARE**

from

THE SERVICE GIVING ORGANISATION

of

**Albert Bunney & Sons
Pty. Ltd.**

2 Ronald Street, Wynnum Central

Phone 396 1006

**THE
HANDBAG
SHOP**

*Apart from HANDBAGS and
an enormous range of
TRAVEL GOODS*

We specialise in

Australian and Queensland
Souvenirs

**59, EDITH STREET,
WYNNUM**

Ph 396 2783

**Swiss
Watch Expert**

(Jim McCarthy)

SEIKO and TISSOT
WATCHES
Wynnum Agents for:

Wedgwood
Stuart Crystal
Orrefors Crystal
Selangor Pewter
Corningware

**MANUFACTURING
JEWELLERS**

**YOUR LOCAL
HOURGLASS JEWELLER**

**63 Edith Street, Wynnum Central
Phone 396 2454**

THE CAST

PHYLL GRIFFIN



"ALICE"

Remember Phyll as the sweet heroine "Raquelita" in "Viva Mexico"? Well stand by for a complete change of pace as she portrays the hard-headed female tycoon — a perfect vehicle for her very big and beautiful soprano voice, with which she is having many current Eisteddfod successes.

RUSSELL FITZPATRICK



"FREDDIE"

It's welcome back to Russell, who starred in our first production of "The Gypsy Baron", and then went on to become several times Queensland champion tenor, star of many Q.L.O. productions and member of both Queensland and Australian Opera Companies.

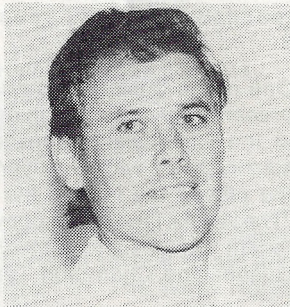
KAY HALFORD



"DAISY"

Kay cut her dramatic teeth in Savoyards chorus and minor comedy roles. She developed a splendid mezzo voice and a fine acting ability, which she has displayed in such roles as "Meg" in "Brigadoon", "Nellie", "South Pacific" and several straight roles in "Independent Productions".

JOHN RAE



"HANS"

John, whom we hauled in by main force to sing "Macgregor" in "Brigadoon" has gone from strength to strength. His voice and dark good looks make him a perfect "Hans", his first major lead after successful minor roles and understudy work. Well done, John!

ISOBELLE TOMKINS



"OLGA"

Issy says the only jobs she has not jet done in theatre are Stage manager and set designer! Currently Director of Savoyards, she has played and sung comedy roles, been dialogue coach, costume designer, wardrobe mistress, make-up lady, publicity officer, programme compiler and most recently producer and choreographer. She also does dramatic roles and appears in many straight plays.

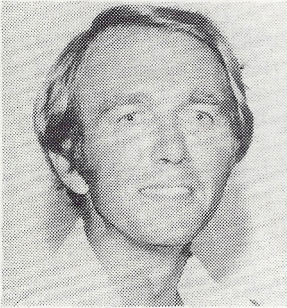
JOHN JOHNSTON



"TOM"

A relative newcomer to the society, John has played such major roles as "Sir Joseph Porter" in "Pinafore" with the Queanbeyan Players in Canberra. His impressive stage presence, acting ability and singing voice make him a valuable acquisition.

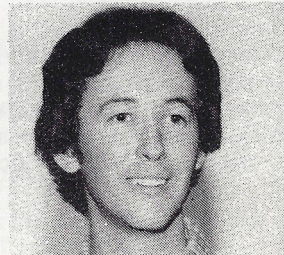
DAVID FITZGERALD



"DICK"

David's stage appearances are somewhat in the nature of a busman's holiday, as he works in television production, and has also appeared on the small screen, his credits including a 3 episode stint on "a highly rating police show". His major roles with Savoyards include Emperor Franz Joseph in "White Horse Inn" and "Baron Zeta" in "The Merry Widow".

DAVID FOLEY



"HARRY"

One of the busiest "theatricals" in Brisbane at present David is combining the study of opera at the Queensland Conservatorium of Music, starring roles with 'Savoyards' and 'Shoestring' (he played the lead in the critically acclaimed "The Apple Tree") and competitive work. At the recent Queensland Eisteddfod David became Queensland Champion Tenor!

Peg Wooldridge



MISS THOMPSON

Peg is a veteran of more than thirty-five years experience playing lead roles in the U.K., specialising in Gilbert and Sullivan. This is her first purely acting part, although she still sings contralto in the chorus when not being "Miss Thompson".

Shirley Johnson



CHOREOGRAPHER

Versatile Shirley is a talented and experienced actress, dancer and choreographer. She will be remembered for her brilliant "Roaring Twenties" choreography for "The Boyfriend".

THE STORY

Self made tycoon "Tom Crowther" is obsessed by European aristocrats, reinforcing his sense of superiority by employing as many "titles" as possible. Daughter "Alice" a tycoon in her own right, tries to buy everything, including "Freddie" — one aristocratic European who can't be bought.

Younger sister "Daisy", wanting some freedom, contracts a "platonic marriage" with "Hans" a handsome fortune-hunter who comes to truly love her as they travel around Europe as "just good friends".

"Tom's" irresponsible brothers "Dick" and "Harry" trick "Tom" into a marriage with the "Countess Olga" who is really a nightclub singer from Berlin.

After a series of comical misadventures "Freddie" wins "Alice" on his terms, "Daisy" and "Hans" confess love and don't go ahead with their agreed divorce, however "Tom" and "Olga" do get divorced, to their mutual relief — and everything ends happily.

To be performed at:

Wynnum High School Assembly Hall, Friday 22nd May, Saturday 23rd May, Friday 29th May.

Cavendish Road High School Assembly Hall: Saturday 30th May.

Aspley High School Assembly Hall: Saturday 13th June.

Murwillumbah Civic Hall: Saturday 20th June.

Nambour Civic Hall: Saturday 27th June.

at 8.00 p.m. 1981

IN MEMORIAM: It is with great sadness that we note the passing of our fellow member and friend, Ted Green. Ted sang in the chorus in several shows and played "Mr. Ritchie" in "Brigadoon" and "The Mayor" in "The White Horse Inn". Ted was always ready to dress up and play Santa Claus, not only for the Society but for anyone's pet charity. He will be sadly missed.

PRODUCER



MARGARET GIBBS

Margaret is highly regarded as a producer of both straight plays and Musicals "The Gibbs Touch" is instantly recognisable in the quality of a show.

THE DOLLAR PRINCESS

by Lee

CAST

ALICE ("The Dollar Princess") PHYLL GRIFFIN
 DAISY (her younger sister) KAY HALFORD
 OLGA ("Countess Prizibichewska") ISOBELLE TOMKINS
 MISS THOMPSON (a blue stocking secretary) PEG WOOLDRIDGE
 HANS (a young Austrian Baron, in love with Daisy) JOHN RAE
 FREDDIE (a young exile, in love with Alice) RUSSELL FITZPATRICK
 CROWTHER (millionaire tycoon, father of Alice and Daisy) JOHN JOHNSTON
 DICK) his brothers DAVID FITZGERALD
 HARRY) DAVID FOLEY

LADIES CHORUS: Louise Adams, Betty Asher, Susette Ereat, Ada Groenhart, Val Jones, Carole McKinney, Jan Nixon, Kaye Nutley, Joycelyn Ohl, Liz Piper, Coral Readshaw, Margaret Scott, Derryl Switzer, Peg Wooldridge, Ness Wright.

MEN'S CHORUS: Max Clarke, Wal Dunning, David Fitzgerald, Bob McKibbin, Bill Maggcais, Tom Mulder, Gil Wright.

DANCERS: Liz Piper, Kaye Nutley, Janet Scott, Vanessa Wells.

SPECIALITY COSSACK DANCER: Robert McLaughlan.

PRINCESS

o Fall

MUSICAL DIRECTOR

*Our much-loved
"Maestro" finally
realises his
ambition to repeat
"The Dollar Princess"
on a big stage
He has been with us
11 years and we hope
he will be with us
11 more!*

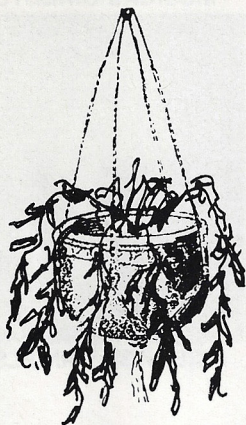


GEORGE DANIELS

MUSICAL NUMBERS

- | | | |
|----------------|--------------------------------------|-------------------------------------|
| | Overture | Orchestra |
| ACT I | 1. Opening Act I | Girls and Alice |
| | 1. (a) Exit and Entrance | Girls and Men |
| | 2. "Hans von Schlick" | Hans and Men |
| | 3. Riding Duet | Hans and Daisy |
| | 4. "She'll be my Love" | Freddie and Chorus |
| | 5. Humming Duet | Alice and Freddie |
| | 6. "U.S.A." | Olga, Dick and Harry |
| ACT II | 8. "Olga from the Volga" | Olga, Chorus |
| | 9. Ballet | Dancers and Chorus |
| | 10. Reprise and Exit | Olga and Chorus |
| | 11. "When Boy Meets Girl" | Alice and Freddie |
| | 12. "The Dollar Princess" | Alice, Daisy, Freddie, Hans, Chorus |
| | 13. "Aren't They Good?" | Daisy and Hans |
| | 14. "Tom, Dick and Harry" | Dick, Harry and Crowther |
| | 15. Finale Act II | Chorus |
| ACT III | 16. Opening Act III | Chorus |
| | 17. Automobile Quintet | Alice, Olga, Dick, Harry, Crowther |
| | 18. Reprise "Aren't They Good" | Daisy and Hans |
| | 19. "Tell Me Again" | Alice and Freddie |
| | 20. Finale Act III | Full Company |

ORCHESTRA: 1st Violin: Warwick Addeney, Christine Morane. 2nd Violin: Keith Sharp, Norma Smith. Viola: Damien Hoey, Mary Walsh. Cello: Doug McGregor. Bass: Maurice Johnson, Jane Osborne. Flute: Ivan Fisher. Oboe: Peter King. Clarinet: Kathy Shakleton, Brian Johnston. Bassoon: Anthony Kanowski. Trumpet: Murray Kaye, David Smith. Trombone: Maurie Grail. Percussion: Ted Colless. Pianistes: Esme Gray, Thea Gray. Conductor: George Daniels.



THE GREENERY

100 FLORENCE STREET
(Opposite Wynnum Central School)

We specialise in —

- INDOOR PLANTS AND INTERIOR DECOR
- WE HAVE WYNNUM'S BEST SELECTION OF HEALTHY SEEDLINGS
- INDOOR PLANTERS, POTS, STANDS, ETC.
- FREE ADVICE WITH YOUR GARDEN PROBLEMS

PHONE 396 5438

JASMINE CANE FURNITURE

*Cool Cane—
Ideal for Q'ld climate*

- Quality Lounge & Dining Suites
- Magazine Racks & Mirrors
- Laundry & Picnic Hampers
- Blinds & Honan Matting
- Shopper & Planter Baskets
- Novelties

183 Bay Terrace
Cnr. Chestnut St.
Wynnum Central
396 3973

MANLY PHARMACY

Keith Thornton
Adrian Tobin—Sean McGarrity

- Rates & Electricity Payments
- All Prescriptions
- Health Foods
- Swimming Pool Chemicals,
- Spare Parts & Accessories
- Rubentsein & Yardley
Cosmetics

FREE OFF STREET PARKING AT REAR

53 CAMBRIDGE PARADE,
MANLY
Phone 396 1814

OUR NEXT PRODUCTION

WATCH THIS SPACE !

***We are negotiating for the rights of an exciting show
for our next production.***

An announcement will be made as soon as negotiations are concluded.

WHY NOT BECOME A SUBSCRIBER?

(Q) What is a subscriber? (A) A wise supporter of Savoyards who pays a year's subscription in advance securing **two** seats for each of the two yearly shows at concessional prices with the advantage of preferential bookings. Cost? Adult \$12.00 Student/Pensioner \$8.00. Send **your** subscription along with your name, address and phone number to Betty Hill, 149 Hindes Street, Lota (Phone 396 2324).

WHY NOT BECOME A SAVOYARD?

Would you like to be part of the fun? Can you sing, act, dance, paint scenery, do stage make-up — or are you interested in learning? **Contact** Betty Hill 396 2324 or Kaye Nutley 396 2263.



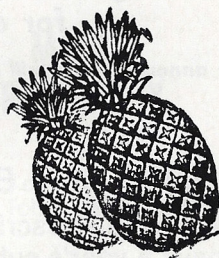
MEET OUR "PROMPT"

A Prompt lady is, ideally, never seen and rarely heard — but when she is heard it should be loud and clear. Nothing is worse than a panic-stricken actor straining to hear a whispered cue. Betty gives everyone in the company a sense of security because she has mastered the difficult — and often underestimated — art of prompting.

From early in rehearsals when books are down and actors groping for lines, Betty reads every line **silently**, with them — throwing a quick clear line when needed. At performances it is the same procedure — every word silently read, lips working even in time with the songs, and should anyone "dry" (an actors nightmare) he will hear his cue firmly and distinctly, and it will be over with the audience scarcely aware of the incident. Betty also knows where every cast member should be on stage at any given moment, every prop, every piece of furniture, and works with the Stage Manager to avert many a potential disaster, dispensing at the same time calm, comfort for "Nerves", and an endless supply of Jelly Babies!

MIDWAY MOTEL

**Howard Street, Nambour
Phone (071) 41 2322**



A'LA CARTE LICENSED RESTAURANT

Open Monday to Saturday 6 p.m. to 9 p.m.

***Pool — Colour TV — Friendly Welcome from your hosts
Elaine and Barry Fisher***

BRIGHTWAYS

LEND'S A HAND TO THE HANDYMAN

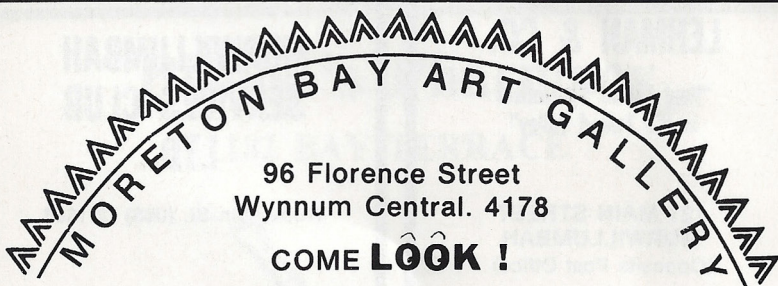
FOR ALL HOUSEHOLD, GARDEN AND GENERAL
HARDWARE

We are stockists of SHEET VINYL

BRIGHTWAYS

AT THE BRIGHTER END OF EDITH ST.
PHONE 396 1070

★ *FREE LOCAL DELIVERY* ★



- Genuine OIL PAINTINGS
- POTTERY • LEATHERWORK and
- HANDCRAFTS • SUPPLIERS OF ART MATERIALS • MACRAME and other Hobby Kits etc.
- FRAMING - made to order

Phone 396 7000

Phone 396 7000

MURWILLUMBAH MOTOR INN

QUALITY ACCOMMODATION-ALL FACILITIES

NO HIGHWAY NOISE

SOLAR HEATED POOL



SLEEP WITH A ZEBRA TONIGHT

17 BYANGUM RD., MURWILLUMBAH, 2484

PHONE (066) 72 2022 TELEX 66271

BOOK AT ANY ZEBRA MOTOR INN

LEHMAN & CO.

"Real Estate Specialists
in the Tweed Valley"

121 MAIN STREET
MURWILLUMBAH
(Opposite Post Office)

Phone
72 2225 a/h 72 2537

**AUCTIONEERS
STOCK & STATION
BUSINESS
AND
REAL ESTATE AGENTS**

MURWILLUMBAH SERVICES CLUB LTD.

Wollumbin St. (066) 72 1388

Welcomes Bona Fide Visitors

- ★ A'la carte dining room
- ★ Bistro open for lunch and dinner
- ★ Bingo Tuesday
- ★ Gala Day Thursday
- ★ Dancing Friday and Saturday
- ★ Variety Concert Sunday afternoon

McDONALD'S MANLY HOTEL



Cambridge Parade, Manly

Enjoy the distinctive atmosphere and full a'la carte cuisine of our "SEA AND STEER", a Restaurant Manly can be truly proud of.

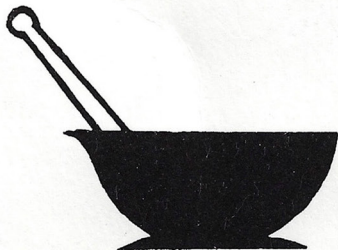
**COME - EAT AND DRINK WITH US.
OPEN 6 DAYS A WEEK, AT YOUR SERVICE
LOOKING FORWARD TO SEEING YOU**

Phone 396 2178

**DOUGLAS McDONALD
PROPRIETOR**

Bishop's Pharmacy

182 BAY TERRACE



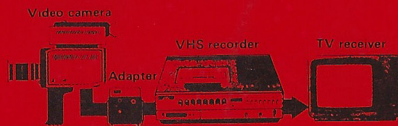
**Hours: Mon.-Fri. 8 a.m.-5.30 p.m.
Sat. 8 a.m.-12 noon**

PHONE 396 1689 or 396 3007

MANLY RADIO

for your

HOME VIDEO SUPPLIES



CAMERAS — RECORDERS — PORTO PACKS — TRIPODS
TELECINE ADAPTORS, ETC. ETC.

SEE RON SCHMIDT AT

MANLY RADIO

Sole Address: 67 CAMBRIDGE PDE., MANLY
Phones 396 1552 and 396 1333



R. F. SCHMIDT,
A.M.I.R.E.E.



EDE'S BEAUTY SALON



(Kaye and Lynne Rabe)

222 BAY TERRACE, WYNNUM

(opposite Old Library)

For personal attention

PHONE 396 2263

FOR YOUR NEXT APPOINTMENT

Ample Parking

Moderate prices

Hairstyles for "The Dollar Princess" created by Kaye and Lynne